



Rusper Court 2A Reddown Road

, Coulsdon, CR5 1AX

£167,500

Nestled on the corner of Reddown Road and Marlpit Lane, this charming first-floor studio apartment in Rusper Court is an ideal choice for commuters seeking convenient access to London. The property boasts a spacious layout, featuring a well-appointed lounge area that seamlessly integrates with the kitchen, creating a welcoming space for relaxation and entertaining.

The apartment includes a bathroom, and a small storage area in the entrance hall, ensuring practicality alongside comfort. Residents will appreciate the added residents private parking and access to a communal garden, perfect for enjoying the outdoors.

Situated less than 400 yards from Coulsdon South Station, this property offers excellent transport links, making it easy to reach the heart of London. Additionally there is Coulsdon Town second Station, Coulsdon Town Centre is also just a short distance away, providing a variety of local eateries and shopping facilities to cater to your everyday needs.

With no onward chain, this delightful flat presents a fantastic opportunity for first-time buyers or investors alike. An early viewing is highly recommended to fully appreciate the potential of this lovely apartment.

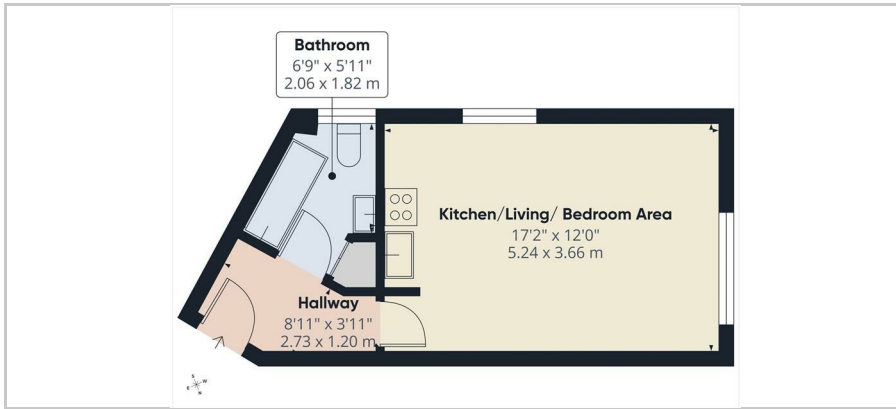
- Great location
- No chain
- Perfect for commuters
- Lounge-kitchen area
- Bathroom
- Entryphone and residents parking

Viewing

Please contact our Coulsdon Sales Office on 0208 763 8878 if you wish to arrange a viewing appointment for this property or require further information.



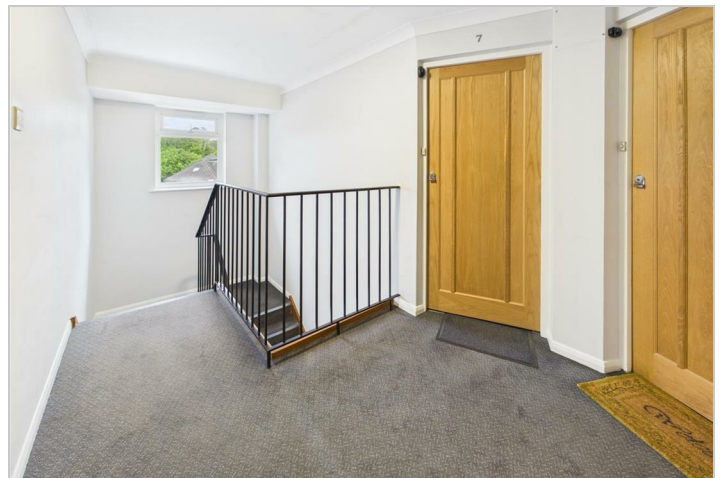
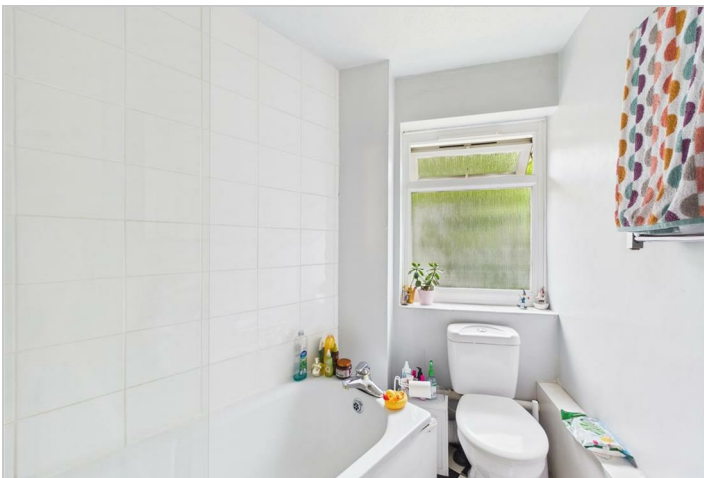
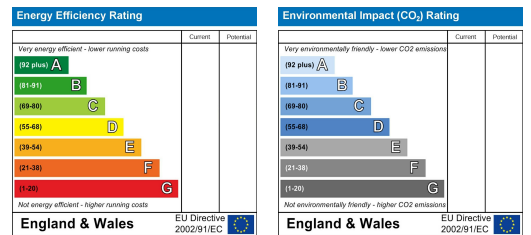
Floor Plan



Area Map



Energy Efficiency Graph



147 Brighton Road,
Coulsdon,
Surrey
CR5 2NJ
Tel: 020 8763 8878
Email: sales@danieladamsestateagents.co.uk
www.danieladamsestateagents.co.uk